

# The Library Link



## February 2012

1530 Concordia West  
Irvine, CA 92612  
(949)214-3090  
www.cui.edu/library

### Library Hours:

**Sunday: 3pm—10pm**

**Monday: 8am—10pm**

**Tuesday: 8am—10pm**

**Wednesday: 8am—10pm**

**Thursday: 8am—10pm**

**Friday: 8am—4:30pm**

**Saturday: CLOSED**

### Library Staff:

#### Carolina Barton

Director of Library Services  
Carolina.Barton@cui.edu  
X3093

#### Kiu Geisler

Coordinator of Acquisitions and  
Library Services  
Kiu.Geisler@cui.edu  
X3094

#### Melanie Junge

Public Services Librarian  
Melanie.Junge@cui.edu  
X3095

#### Ramez Mikhail

Information Services Librarian  
Ramez.Mikhail@cui.edu  
X3096

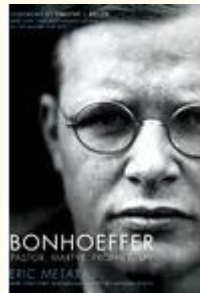
#### Rose Kollmorgen

Public Services Librarian  
Rose.Kollmorgen@cui.edu  
x3097

#### Bob Park

Cataloging Librarian  
Bob.Park@cui.edu

## WHAT ARE YOUR COLLEAGUES READING



**Re**cently the CUI Library asked our distinguished faculty to tell us about one of the last good books they read. The results covered a wide range of genres and topics, from math to history, from non-fiction to fiction. Dr. Kurt Krueger (CUI President), for example, recommended, *Bonhoeffer: Pastor, Martyr, Prophet, Spy*. He writes, "I recommend *Bonhoeffer: Pastor, Martyr, Prophet, Spy* by Eric Metaxas. Metaxas, a conservative Christian, provides a fascinating account of Bonhoeffer's formation as a Lutheran scholar and pastor, of his resistance to the Nazi propaganda machine and of his leadership in an effort to remove

Hitler from power during WWII. Interspersed throughout the book are quotations from Bonhoeffer's letters, sermons and essays which give evidence to Bonhoeffer's intelligence and humanity. The book is accessible to the general reader but probably also of value to the scholar." For more faculty recommendations please see the Library website or view the Faculty Recommendation Display on the first floor of the Library.

## LIBGUIDES—SHARE KNOWLEDGE AND INFORMATION

**Fa**ll semester has seen exceptional growth in the use of LibGuides as great research tools. If you recall in the last newsletter, the Library was planning the introduction of LibGuides, which are simply subject specific webpages that point students directly to Library sources pertinent to their courses and subjects. During summer 2011, Library staff began work on creating LibGuides. They were launched in Fall 2011 for use by and feedback from students and faculty.

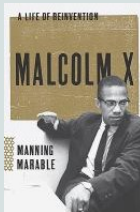
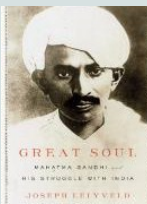
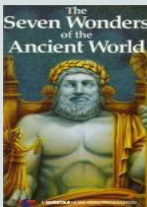
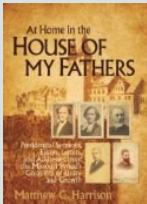
Today, the Library offers 21 LibGuides covering many subjects. Many requests for LibGuides from faculty have been received throughout the fall semester, and we additionally welcome requests for LibGuide requests. If you are teaching a course in Spring and would like your students to enjoy the convenience of a tailored research guide, please let us know.



## CUI Library Use on the Rise

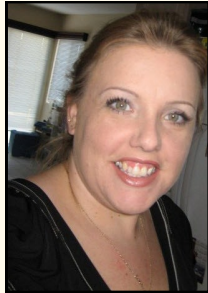
	2010	2011
<b>Door Count</b>	26,077	60,978
<b>Items Checked Out</b>	9,008	9,443
<b>Conference Room Requests</b>	955	961
<b>Presentations &amp; Workshops</b>	29	52

Some of the latest additions to the collection



To view more of our newest additions, visit the Library webpage at [www.cui.edu/library](http://www.cui.edu/library). Click Library Catalog. In the upper right corner under Library Info click New Books

## MEET THOSE WHO MAKE IT ALL POSSIBLE MELANIE JUNGE, PUBLIC SERVICES LIBRARIAN



**Ev**er wonder who keeps the Circulation Desk operation humming along? Who keeps the Faculty Reserve Shelves updated, the 18 student assistants on track, and prepares Library displays and exhibits?

Melanie Junge does all this and more! Now in her 3rd year at the Library, Melanie graduated with a Master's Degree in Library Science from Drexel University before joining the Concordia staff. She brings with her special knowledge about library operations and sources as well as English literature and education.

Stop by and say hi to her next time you visit the Library. Her office is clearly visible behind the Circulation Desk and she is always happy to meet faculty, staff, and students.

### PURCHASE RECOMMENDATIONS FOR THE LIBRARY

**We** are currently purchasing new books for our main collections, and would appreciate faculty suggestions and input in this endeavor. If there are any books you would like to recommend that would enhance your subject area, please email Librarian@cui.edu with the titles and other pertinent information. Regrettably, we cannot subscribe to any new databases or journals at this time, but would still be interested in hearing suggestions for future consideration.

### REQUEST FOR LIBRARY INSTRUCTION

**Th**e Library is dedicated to working closely with faculty to meet the needs of Concordia students. With this in mind, we offer the option of class Library instruction for your students. A librarian can visit your class to explain how to use different Library resources based on the type and level of instruction best suited for your students. Instruction may also be adapted to a specific assignment or project.

For more information please contact Ramez Mikhail at [ramez.mikhail@cui.edu](mailto:ramez.mikhail@cui.edu)

### GROVE MUSIC ONLINE

**Grove Music Online** is a dynamic online resource and the unsurpassed authority on all aspects of music. Now available through the Oxford Music Online gateway, it is the latest addition to our expanding selection of scholarly databases!



### NEW INTEGRATED LIBRARY SYSTEM (ILS)



**La**st Spring we reported that the Library was planning on migrating to a more advanced catalog software developed by TLC, a West Virginia company specializing in library solutions. We are pleased to announce that migration was a success! The Library has now been using the new TLC product for the entire Fall semester, and has received much positive feedback from students and faculty. TLC's advanced software has helped the Library streamline its workflow, while providing students and faculty with a richer user experience, and many new options and features. For example, TLC now allows students to renew their books online, see the latest additions to the collection, and place holds on checked out books. Packaged in a very user-friendly interface, the Library is pleased to offer this upgraded tool to the Concordia community.