

May/June 2009



School of Education Newsletter  
 1530 Concordia West  
 Irvine, CA 92612  
 949-854-8002 ext 1355

\$\$\$ **FINANCIAL AID** \$\$\$

The 2009-2010 Financial Aid information and required forms are available on the CUI website at cui.edu. Click on Student Services, then Financial Aid. Contact Ken Dillinger at ext. 1121 if you have questions.

**APLE Program**

The Assumption Program of Loans for Education (APLE) is a state-funded teacher incentive program administered by the California Student Aid Commission. This loan assumption program is for students pursuing an initial teaching credential who agree to teach in a designated subject shortage area or schools with high populations of low-income students. Applications are available in the Graduate Admission Office and the Financial Aid Office. Both offices are located in Grimm Hall. For more information please contact Ken Dillinger at ext. 1121.



**SCHOOL OF EDUCATION  
 HOURS**

**Summer Session I (5/26-6/25)**

**Summer Session II (6/29-7/16)**

**Summer Session III (7/20-8/7)**

Mon-Th 8am -4:30pm, Fri 8-12pm

To ensure prompt service, please call ahead to make an appointment.

**Attention School of Education Seniors!**

If you are graduating in May 2009, you need to "transition" to the Post-BA Credential Program to continue taking credential courses or student teach as a postbac. A packet of information has been sent to you. If you did not receive a packet or have questions, please contact Debbie Brumfield at ext. 1356 or email [Debbie.brumfield@cui.edu](mailto:Debbie.brumfield@cui.edu).

**Fall 2009 Student Teaching**

Please note: Last CSET testing date for Fall 2009 Student Teaching is May 16, 2009. *If you have attempted CSET, please submit your score report to Debbie Brumfield, Beta 108, immediately even if you did not pass.*

School of  
 Education  
 Directory



Dr. Joseph Bordeaux, ext 1345  
[Joseph.Bordeaux@cui.edu](mailto:Joseph.Bordeaux@cui.edu)  
 Dean, School of Education

Dr. Jan Massmann, ext 1336  
[Jan.Massmann@cui.edu](mailto:Jan.Massmann@cui.edu)  
 Assistant Dean, School of Education

Dr. Michael Schulteis, ext. 1835  
[Michael.Schulteis@cui.edu](mailto:Michael.Schulteis@cui.edu)  
 Director of Undergraduate Teacher  
 Education Program

Ron Fritsch, ext 1353  
[Ron.Fritsch@cui.edu](mailto:Ron.Fritsch@cui.edu)  
 Director of Off-Campus MA  
 Program

Jason Neben, ext 1332  
[Jason.Neben@cui.edu](mailto:Jason.Neben@cui.edu)  
 Director of Student Teaching/  
 Lutheran Placement

Debbie Brumfield, ext 1356  
[Debbie.Brumfield@cui.edu](mailto:Debbie.Brumfield@cui.edu)  
 Lead Credential Analyst/ Post BA  
 Advisor/Undergraduate Program  
 Admissions

Carrie Fick, ext 1407  
[Carrie.Fick@cui.edu](mailto:Carrie.Fick@cui.edu)  
 Assist. Director of Placement

Carolyn Ruhl, ext. 1355  
[Carolyn.Ruhl@cui.edu](mailto:Carolyn.Ruhl@cui.edu)  
 Departmental Assistant

Vikki Camper, ext. 1382  
[Vikki.Camper@cui.edu](mailto:Vikki.Camper@cui.edu)  
 Coordinator of Field Experience,  
 TPA Assistant Coordinator

Stephanie Bartell, ext. 1132  
[Stephanie.bartell@cui.edu](mailto:Stephanie.bartell@cui.edu)  
 Graduate Admissions

Tiffany Coldiron, ext. 1388  
[Tiffany.coldiron@cui.edu](mailto:Tiffany.coldiron@cui.edu)  
 Assistant to the Dean

## Important Announcements!!

### Graduation Applications

The graduation application is now available online at [www.cui.edu](http://www.cui.edu). Click on Student Services, Registrar, Graduation Form and Graduation Applications. The cost and deadlines are located with the application. All students must complete a graduation form. Please note: Spring 09 applications are not available online. Call ext.1355 to request an application.

### Credential Students

If you are in the credential program and would like to **convert** to the Masters of Education Program, you must declare such **BEFORE** your full-time **Student Teaching** semester. Eligibility requirements apply. Contact Debbie Brumfield for more information.

### Credential Filers

Please be reminded, Child/Infant/Adult CPR certification must be current at the time of filing for your credential.

Eagles email account and Campus Box – Remember your “eagles” email account is your official university email account. Check it frequently.

### SHARE THE EXPERIENCE...

If you know someone looking for a great experience in the following:

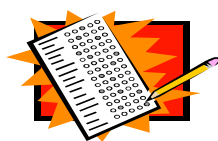
- ◆ MA in Education now held throughout Orange and LA Counties and in the Temecula area
- ◆ MA Online - no commute
- ◆ Teaching Credential-with or without a Master's Degree

If you are enjoying your experience at Concordia, tell others about us.

### Your Student Number

Your Banner ID number is on the back of your student identification card. Because of privacy issues, ID numbers cannot be given over the phone. Photo ID is required to receive the information. For further information please contact ext. 1251.

## Testing Schedule



Many students have testing scores reported directly to Concordia. We thank you for this. However, you still need to bring original CBEST verification sheets, CSET score sheets, and RICA score sheets to the School of Education.

**CBEST**  
Advance registration @  
[www.cbest.nesinc.com](http://www.cbest.nesinc.com)  
or Call (800) 262-5080  
(916)928-4001

**Testing Dates:**  
June 13, 2009

**CSET**  
Register online @  
[www.cset.nesinc.com](http://www.cset.nesinc.com)  
or Call (800) 205-3334  
(916)928-4003

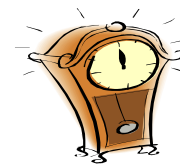
**Testing Dates:**  
May 16, 2009  
July 18, 2009

Please note: Last testing date for Spring 2009 Student Teaching is Nov. 1st.

**RICA**  
Register online @  
[www.rica.nesinc.com](http://www.rica.nesinc.com)  
(916)928-4004

**ELEMENTARY ONLY.** Multiple Subject Students must pass the RICA exam prior to filing for their **FIRST** credential regardless of whether that is a Preliminary or Professional clear. Your program will not be complete until you do so. This could also affect your eligibility to apply for a credential in another state. (This is a requirement for credentialing, not student teaching.)

**DO NOT TAKE THE RICA UNTIL AFTER YOU COMPLETE EDUC 460/560.**  
**Testing Dates:**  
June 13, 2009



### Hours of Campus Facilities



### Founders Bookstore Summer Hours

Monday-Thursday:  
10am-2pm

Friday: 9am-noon

For special hours check:  
[www.cuibookstore.com](http://www.cuibookstore.com)



### Eagle Rock SummerHours

Closed

### Emendare Summer Hours

Closed



### LIBRARY SUMMER HOURS

Monday-Friday:  
9am-4:30pm  
Saturday & Sunday  
Closed

Please check the library website at [library.cui.edu](http://library.cui.edu) for additional hours.