

AUS TIEFER NOT

Flute

confessional hymn for small orchestra & voices
from the library of the Concordia Sinfonietta (www.cui.edu/music)

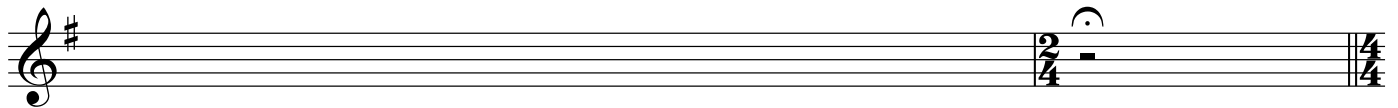
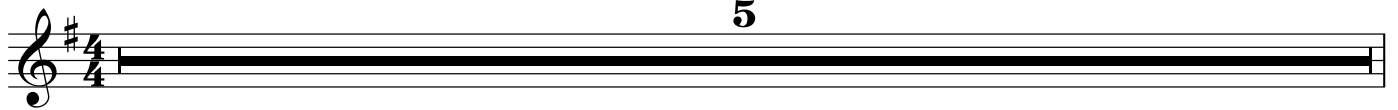
Text & Tune by Martin Luther (1483-1546)

musical setting by Johann Walter (1496-1570)
tr./orch. Christian Guebert & Jeff Held

Stanza 1: Cantor alone (separate part)

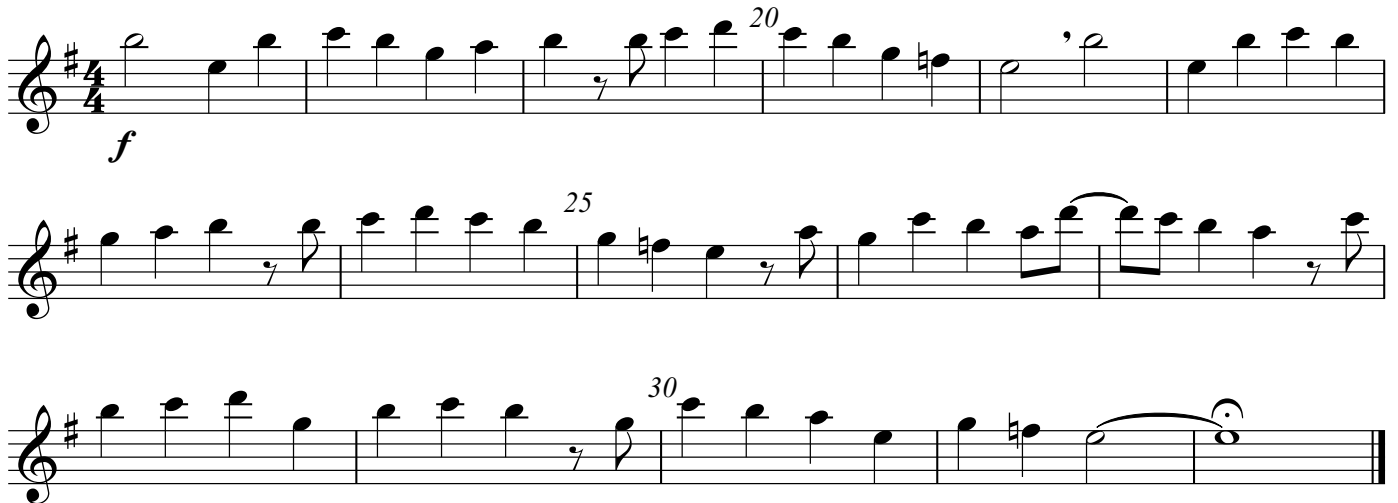
Stanza 2: orchestra alone

slow ♩ = c. 72



Stanza 3:

Voices sing melody (separate part), orchestra accompanies
(option: use brass or winds only, strings TACET)



Clarinet in B \flat

AUS TIEFER NOT

confessional hymn for small orchestra & voices
from the library of the Concordia Sinfonietta (www.cui.edu/music)

Text & Tune by Martin Luther (1483-1546)

musical setting by Johann Walter (1496-1570)
tr./orch. Christian Guebert & Jeff Held

Stanza 1: Cantor alone (separate part)

Stanza 2: orchestra alone

slow $\text{♩} = \text{c. } 72$

Musical notation for Stanza 1 and Stanza 2. Stanza 1 is a single melodic line for the Cantor, starting at measure 1 and ending at measure 15. It begins with a treble clef, a key signature of three sharps (F#, C#, G#), and a 4/4 time signature. The tempo is marked 'slow' with a quarter note equal to approximately 72 beats per minute. The dynamics are marked 'p' (piano). Stanza 2 is an orchestral accompaniment for the same melody, starting at measure 1 and ending at measure 15. It features a treble clef, the same key signature and time signature, and includes various rhythmic patterns and rests. Measure numbers 5, 10, and 15 are indicated above the staff.

Stanza 3:
Voices sing melody (separate part), orchestra accompanies
(option: use brass or winds only, strings TACET)

Musical notation for Stanza 3. It consists of three staves of music. The first staff is the vocal melody, starting at measure 16 and ending at measure 30. It begins with a treble clef, a key signature of three sharps, and a 4/4 time signature. The dynamics are marked 'f' (forte). The second and third staves are the orchestral accompaniment for the vocal melody, starting at measure 16 and ending at measure 30. They feature a treble clef, the same key signature and time signature, and include various rhythmic patterns and rests. Measure numbers 20, 25, and 30 are indicated above the staff.

© 2017 All rights reserved.

User may adapt this arrangement to best suit ensemble, but may not distribute the adaptation to other groups without permission.

Bassoon

AUS TIEFER NOT

confessional hymn for small orchestra & voices
from the library of the Concordia Sinfonietta (www.cui.edu/music)

Text & Tune by Martin Luther (1483-1546)

musical setting by Johann Walter (1496-1570)
tr./orch. Christian Guebert & Jeff Held

Stanza 1: Cantor alone (separate part)

Stanza 2: orchestra alone

slow ♩ = c. 72

p

5

10

15

Stanza 3:
Voices sing melody (separate part), orchestra accompanies
(option: use brass or winds only, strings TACET)

16

Trumpet in B \flat

AUS TIEFER NOT

confessional hymn for small orchestra & voices
from the library of the Concordia Sinfonietta (www.cui.edu/music)

Text & Tune by Martin Luther (1483-1546)

musical setting by Johann Walter (1496-1570)
tr./orch. Christian Guebert & Jeff Held

Stanza 1: Cantor alone (separate part)

Stanza 2: orchestra alone

slow ♩ = c. 72

5

10

Stanza 3:
Voices sing melody (separate part), orchestra accompanies
(option: use brass or winds only, strings TACET)

mf

20

25

30

Flugelhorn in Bb

AUS TIEFER NOT

confessional hymn for small orchestra & voices
from the library of the Concordia Sinfonietta (www.cui.edu/music)

Text & Tune by Martin Luther (1483-1546)

musical setting by Johann Walter (1496-1570)
tr./orch. Christian Guebert & Jeff Held

Stanza 1: Cantor alone (separate part)

Stanza 2: orchestra alone

slow SOLO

5 ,

10

15

mf

Detailed description: This block contains the musical notation for the first two stanzas. Stanza 1 is a single melodic line for the Cantor, marked 'slow SOLO' and 'mf'. It begins in 4/4 time with a treble clef and a key signature of three sharps (F#, C#, G#). The melody consists of quarter and eighth notes, with some rests. Stanza 2 is an instrumental arrangement for the orchestra, also in 4/4 time, featuring a more complex rhythmic pattern with sixteenth and thirty-second notes. Measure numbers 5, 10, and 15 are indicated above the staff. The piece concludes with a double bar line and a 2/4 time signature change.

Stanza 3:
Voices sing melody (separate part), orchestra accompanies
(option: use brass or winds only, strings TACET)

20 ,

mf

25

30

Detailed description: This block contains the musical notation for Stanza 3. It features a vocal melody line and an instrumental accompaniment line, both in 4/4 time with a treble clef and a key signature of three sharps. The vocal line is marked 'mf' and consists of quarter and eighth notes. The instrumental line provides harmonic support with similar rhythmic values. Measure numbers 20, 25, and 30 are indicated above the staff. The piece ends with a double bar line and a final note.

Trombone 1

AUS TIEFER NOT

confessional hymn for small orchestra & voices
from the library of the Concordia Sinfonietta (www.cui.edu/music)

Text & Tune by Martin Luther (1483-1546)

musical setting by Johann Walter (1496-1570)
tr./orch. Christian Guebert & Jeff Held

Stanza 1: Cantor alone (separate part)

Stanza 2: orchestra alone

slow ♩ = c. 72

5

10

Stanza 3:
Voices sing melody (separate part), orchestra accompanies
(option: use brass or winds only, strings TACET)

f

20

25

30

Trombone 2

AUS TIEFER NOT

confessional hymn for small orchestra & voices

from the library of the Concordia Sinfonietta (www.cui.edu/music)

Text & Tune by Martin Luther (1483-1546)

musical setting by Johann Walter (1496-1570)

tr./orch. Christian Guebert & Jeff Held

Stanza 1: Cantor alone (separate part)

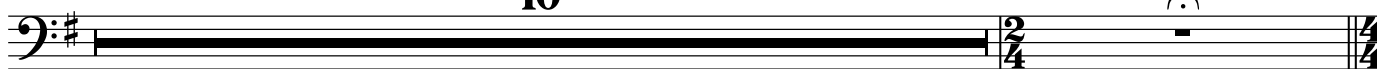
Stanza 2: orchestra alone

slow ♩ = c. 72

5



10



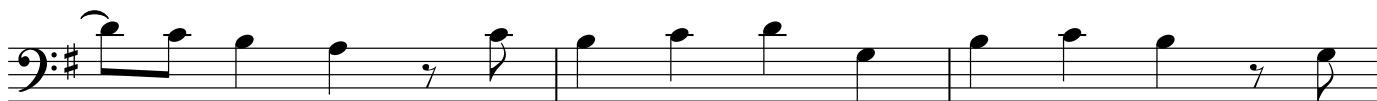
Stanza 3:

Voices sing melody (separate part), orchestra accompanies
(option: use brass or winds only, strings TACET)

20



25



30



Bass Trombone

AUS TIEFER NOT

confessional hymn for small orchestra & voices
from the library of the Concordia Sinfonietta (www.cui.edu/music)

Text & Tune by Martin Luther (1483-1546)

musical setting by Johann Walter (1496-1570)
tr./orch. Christian Guebert & Jeff Held

Stanza 1: Cantor alone (separate part)

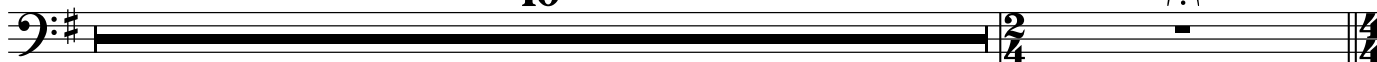
Stanza 2: orchestra alone

slow ♩ = c. 72

5



10



Stanza 3:

Voices sing melody (separate part), orchestra accompanies
(option: use brass or winds only, strings TACET)

20



25



30



Violin I

AUS TIEFER NOT

confessional hymn for small orchestra & voices

from the library of the Concordia Sinfonietta (www.cui.edu/music)

Text & Tune by Martin Luther (1483-1546)

musical setting by Johann Walter (1496-1570)

tr./orch. Christian Guebert & Jeff Held

Stanza 1: Cantor alone (separate part)

Stanza 2: orchestra alone

slow ♩ = c. 72

p

5

10

15

Stanza 3:
Voices sing melody (separate part), orchestra accompanies
(option: use brass or winds only, strings TACET)

f

20

25

30

Violin II

AUS TIEFER NOT

confessional hymn for small orchestra & voices
from the library of the Concordia Sinfonietta (www.cui.edu/music)

Text & Tune by Martin Luther (1483-1546)

musical setting by Johann Walter (1496-1570)
tr./orch. Christian Guebert & Jeff Held

Stanza 1: Cantor alone (separate part)

Stanza 2: orchestra alone

slow ♩ = c. 72

5 ,

10

15

Stanza 3:
Voices sing melody (separate part), orchestra accompanies
(option: use brass or winds only, strings TACET)

20 ,

25

30

Viola

AUS TIEFER NOT

confessional hymn for small orchestra & voices
from the library of the Concordia Sinfonietta (www.cui.edu/music)

Text & Tune by Martin Luther (1483-1546)

musical setting by Johann Walter (1496-1570)

tr./orch. Christian Guebert & Jeff Held

Stanza 1: Cantor alone (separate part)

Stanza 2: orchestra alone

slow ♩ = c. 72

5

10

15

Stanza 3:
Voices sing melody (separate part), orchestra accompanies
(option: use brass or winds only, strings TACET)

20

25

30

Cello

AUS TIEFER NOT

confessional hymn for small orchestra & voices
from the library of the Concordia Sinfonietta (www.cui.edu/music)

Text & Tune by Martin Luther (1483-1546)

musical setting by Johann Walter (1496-1570)
tr./orch. Christian Guebert & Jeff Held

Stanza 1: Cantor alone (separate part)

Stanza 2: orchestra alone

slow ♩ = c. 72

p

5

10

15

Stanza 3:
Voices sing melody (separate part), orchestra accompanies
(option: use brass or winds only, strings TACET)

20

f

25

30

Double Bass

AUS TIEFER NOT

confessional hymn for small orchestra & voices
from the library of the Concordia Sinfonietta (www.cui.edu/music)

Text & Tune by Martin Luther (1483-1546)

musical setting by Johann Walter (1496-1570)
tr./orch. Christian Guebert & Jeff Held

Stanza 1: Cantor alone (separate part)

Stanza 2: orchestra alone

slow ♩ = c. 72

p

5

10

15

Stanza 3:
Voices sing melody (separate part), orchestra accompanies
(option: use brass or winds only, strings TACET)

20

f

25

30